

Sabaki Open Go Championships – 2008 Hosted by Sabaki Go Club

Edmonton, November 15th~16th, 2008



Where: Korean Center, 9650 – 105A Avenue,
Edmonton

Time: Doors open at 8:30 am, games start at 9am.

Divisions	Entry Fees	Youth/ Senior
A – 4 dan up	\$20.00	\$15
B – 1 dan – 3 dan	\$20.00	\$15
C – 5 kyu – 1 kyu	\$20.00	\$15
D – 12 kyu – 6 kyu	\$20.00	\$15
E – beginner	\$10.00	\$10

**Divisions are subject to change depending on registrations.*

Events

Main event: Sabaki Swiss format

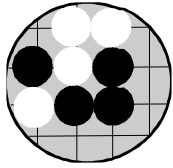
45 min./player, Byo Yomi: 25 stones in 10min. Komi: 6½

Prizes: Great prizes!!! Any division with 6 or more entries will have a runner-up prize.

Refreshment: Entry fee includes teas, coffee, juice, and snacks.

Billets: Limited billets available for Friday and Sat. nights on a first come, first served basis. Players needing a billet must confirm registration early.

Banquet: A Chinese style 8-10 course banquet is held on Saturday night at 7:00 p.m. for \$20.00 per person (includes tax). Location to be announced.



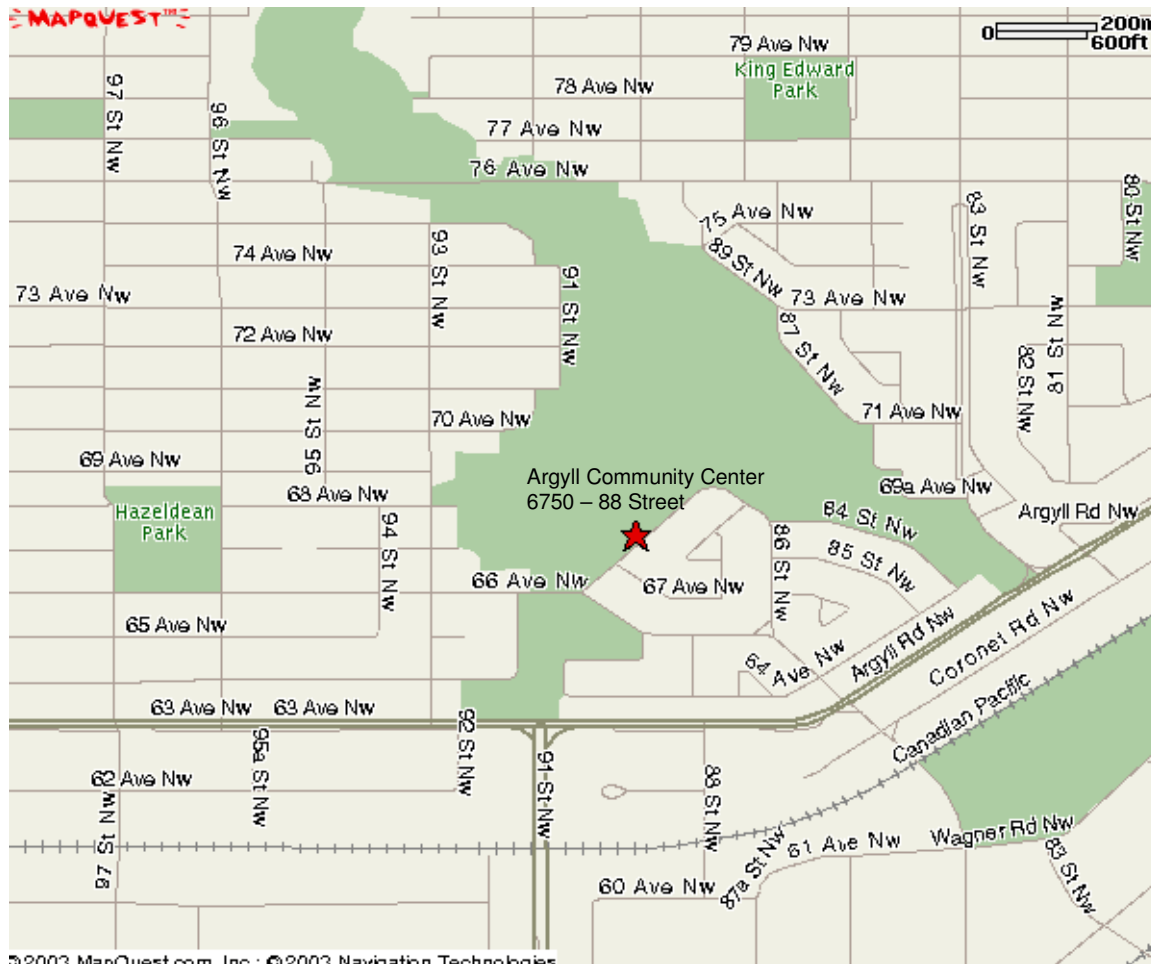
Sabaki Open Go Championship – 2008 Edmonton, November 15th~16th

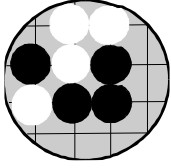
The Sabaki Go Club is pleased to announce the 2008 Sabaki Go Championship hosted by the Sabaki Go Club!

Players from across the province and elsewhere are invited to Edmonton November 15th and 16th. The tournament will feature a new format – Sabaki Swiss. Fantastic prizes are planned for all divisions! In addition to the opportunity to play, learn, and compete, go players around the province will share experiences, meet old friends, and make new ones.

All the details are available on the attached information sheet and registration form.

From 20 kyu to 6 dan, there will be something for everyone. Don't miss it!





Sabaki Open Go Championship – 2008 Player Registration Form

Edmonton, November 15th ~16th

Name: _____	
Address: _____	
Phone: _____	Rank: _____
Email: _____	

I require a billet: Yes _____ No _____

Describe how and when you will be traveling:

I/We will be attending the banquet: How many? _____ Will decide later _____
(Inquire about cost for children)

Payment Enclosed: Tournament: \$ _____ Banquet: \$ _____ **Total: \$ _____**

(Make cheque payable to – **SABAKI GO CLUB**)

Entry deadline: Tuesday November 11th, 7:00 pm

Entries received after this date will be accepted at the discretion of the tournament committee.

Please complete this form and return to Chuck or Luke. or to

Terry Fung

Phone: 780-422-0183 (day)
780-489-0738 (evening)

Fax: 780-415-9823

Mail: 5812-181 Street, Edmonton, AB T6M 1V7
Email: terry.fung@gov.ab.ca