

Sabaki Open Go Championships – 2007

Hosted by Sabaki Go Club

Edmonton, November 24th~25th, 2007
(Beginner Tournament – Saturday only)



Where: Argyll Community Centre, 6750 - 88 Street
See map attached

Time: Doors open at 8:30 am, games start at 9am.

Divisions	Entry Fees	Youth/ Senior
A – 4 dan up	\$20.00	\$15
B – 1 dan – 3 dan	\$20.00	\$15
C – 5 kyu – 1 kyu	\$20.00	\$15
D – 12 kyu – 6 kyu	\$20.00	\$15
E – beginner	\$10.00	\$10

**Divisions are subject to change depending on registrations. Entry fees include lunches*

Events

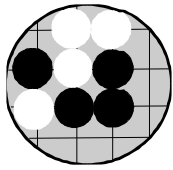
- Main event** Double elimination format
45 min./player, Byo Yomi: 25 stones in 10min. Komi: 6½
If eliminated before 10am Sunday, you are eligible to enter the lightning event
- Lightning** Single elimination format
10 min./player, Byo Yomi: 25 stones in 5 min. Komi: 6½
2 divisions
Handicap set to 1 less than rating difference, maximum handicap: 9 stones
- Self Pairing** Includes all recorded games (main, lightning, and other)
Time per player is same as main event except for lightning games.
Self pair coordinator will schedule games as required.
Certificate awards: Prolific – player with the most games recorded
Teacher – player with the most handicap games as white

Prizes: Great prizes!!! Any division with 6 or more entries will have a runner-up prize.

Food: Entry fee includes Sat. Lunch, teas, coffee, juice, Sunday snacks.

Billets: Limited billets available for Friday and Sat. nights on a first come, first served basis. Players needing a billet must confirm registration early.

Banquet: A Chinese style 8-10 course banquet is held on Saturday night at 7:00 p.m. for \$20.00 per person (includes tax). Location to be announced.



Sabaki Open Go Championship – 2007 Edmonton, November 24th~25th

The Sabaki Go Club is pleased to announce the 2007 Sabaki Go Championship hosted by the Sabaki Go Club!

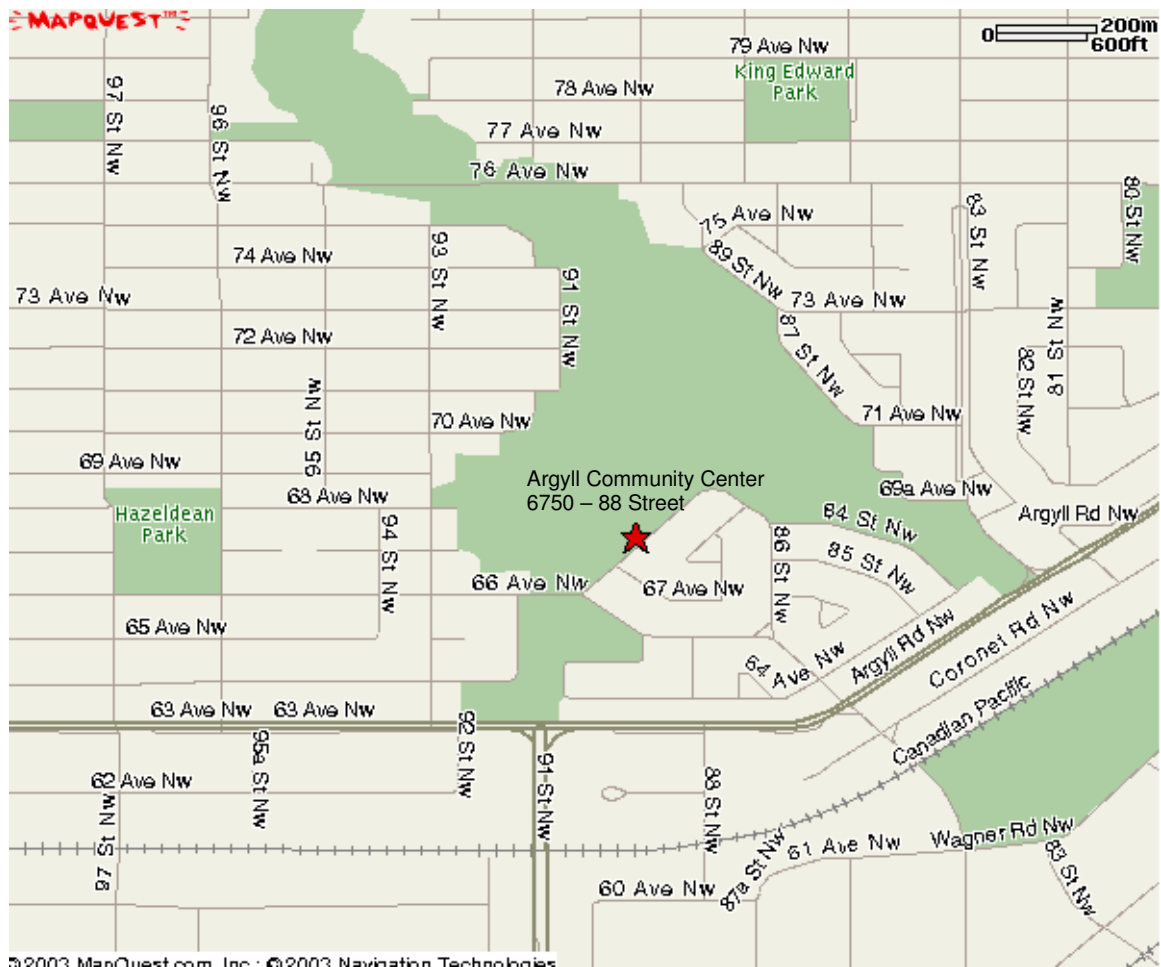
Players from across the province and elsewhere are invited to Edmonton November 24th and 25th. The tournament will feature a double-elimination format in 4 divisions. The beginner division will be self pairing, allowing both small board games and large board games and reduced handicap where appropriate. Fantastic prizes are planned for all divisions! The beginner group will be a Saturday only tournament. Hot lunch for parents and visitors is available for \$5.00.

Players eliminated in the main event will continue to compete against others eliminated.

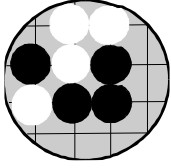
In addition to the opportunity to play, learn, and compete, go players around the province will share experiences, meet old friends, and make new ones.

All the details are available on the attached information sheet and registration form.

From 20 kyu to 6 dan, there will be something for everyone. Don't miss it!



©2003 MapQuest.com, Inc. ©2003 Navigating Technologies



Sabaki Open Go Championship – 2007 Player Registration Form

Edmonton, November 24th ~25th

Name: _____	
Address: _____	
Phone: _____	Rank: _____
Email: _____	

I require a billet: Yes _____ No _____

Describe how and when you will be traveling:

I/We will be attending the banquet: How many? _____ Will decide later _____
(Inquire about cost for children)

Payment Enclosed: Tournament: \$ _____ Banquet: \$ _____ **Total: \$ _____**

(Make cheque payable to – **SABAKI GO CLUB**)

Entry deadline: Tuesday November 20th, 7:00 pm

Entries received after this date will be accepted at the discretion of the tournament committee.

Return Form to: **Chuck Elliott**

Phone: 780-426-5716 (day)
 780-452-1874 (evening)

Cell: 780-982-7014
Fax: 780-423-1911

Mail: 10828-122 Street, Edmonton, AB T5M 0A6
Email: chuckbrenda@shaw.ca