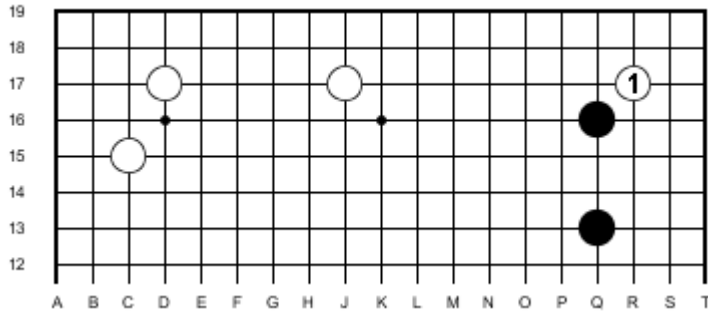


## Basic Concepts - Level 1 - 8

### Invade the corner at the 3-3 point

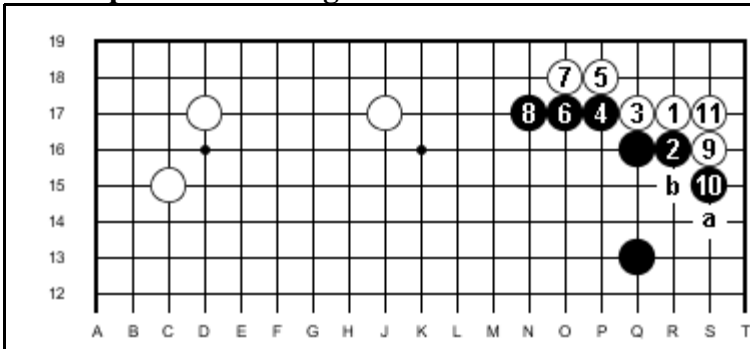
This meaning of this proverb is that the 3-3 point is often the vital point to invade the corner..

#### Example A:



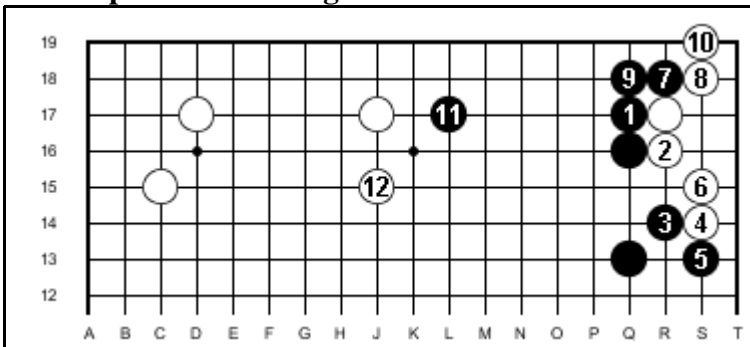
In the above diagram white invades at the 3-3. Black has to decide on which side to block. Either way black suffers a loss.

#### Example A: - Blocking below



The result to 10 is clearly not very satisfactory for black. White has gouged out a big corner leaving trouble behind at a and b

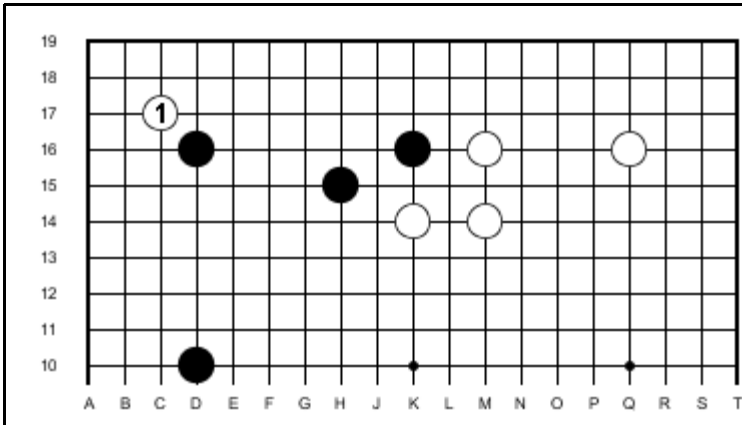
#### Example A: - Blocking on the left



Here black blocks on the left and white easily lives. There are other patterns possible of course and the player cannot play carelessly but must strive for the best sequence.

This is of course a better result for black than the previous diagram.

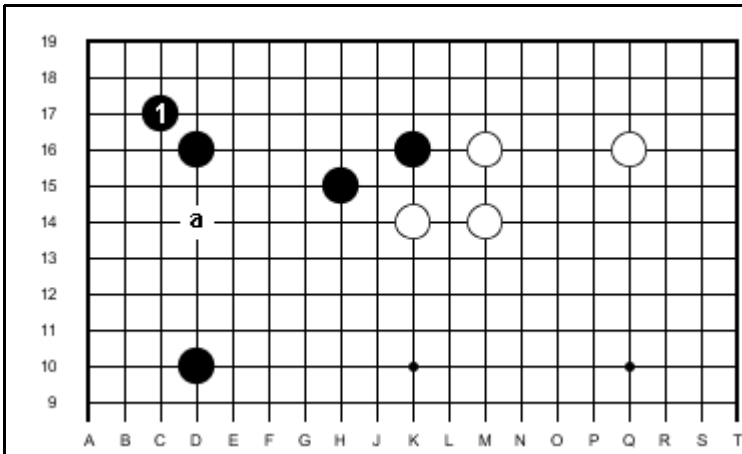
### Example B



Here it is appropriate for white to invade at the 3-3.

White lives easily in sente and black's loss is enormous.

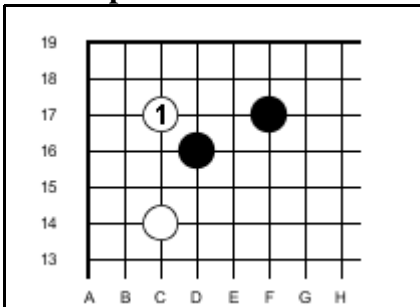
If it was black's move what should he do?



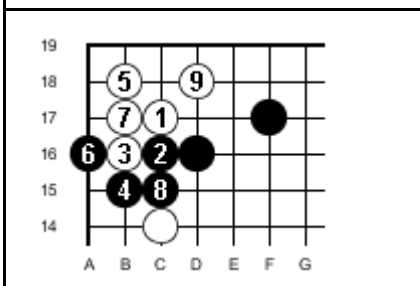
Black 1 is one way of defending. "a" or at C-15 is also very good.

Where is white's weak point on the right side? You should know by now

### Example C



Here we look at the 3-3 invasion when white has approached the corner enclosure.



If white decline a ko with 7 and simply connects then he lives with 9.

White suffers damage on the outside however so one must judge the merits of each possibility.