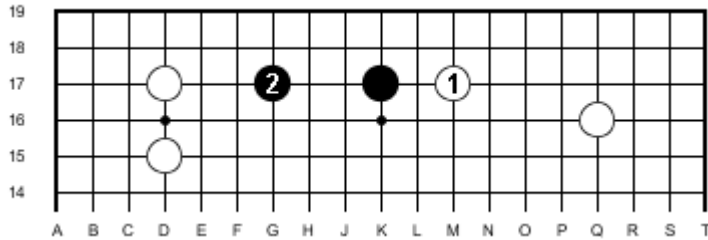


Basic Concepts - Level 1 - 6

A two space extension on the 3'rd line is a good base

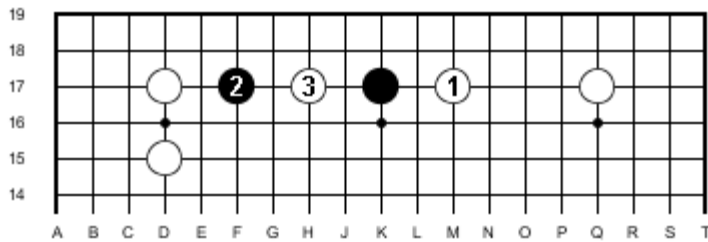
What this means is illustrated in the following diagram.

Example A:



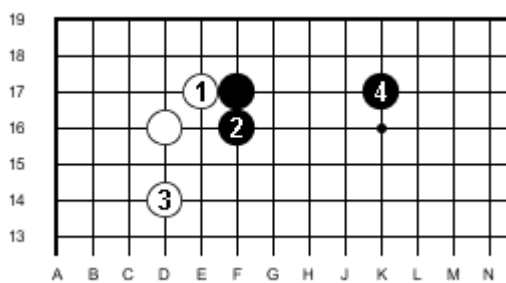
In the above diagram white attacks the lone black stone on the 3'rd line and black reacts by making the 2 space extension on the 3'rd line. This gives black a good base for eyes. White can still attack. What happens if black extends 3 spaces instead of 2? Can white separate the 2 black stones?

Example B:



In example B black extends 3 spaces and white invades. It should be clear that black is at a disadvantage here because his stones are divided. Black may attach underneath the stone at 3 to start a fight. Work through what might follow.

Example C: - When a 3 space extension is appropriate.



In this example black has extended to 2 after white attaches with 1. White then extends out the side on the 4'rth line. The 2 black stones lack a base so black extends 3 spaces to 4. This is a very good move. A 2 space extension would be over concentrated because the wall formed by black 2 extends to the 4'th line. If another black stone were added on the 5'th line at F-15 a black play at 4 (K-17) would be over concentrated. Black would prefer it at L-17.