

Basic Concepts - Level 1 - 5 Surrounding Stones

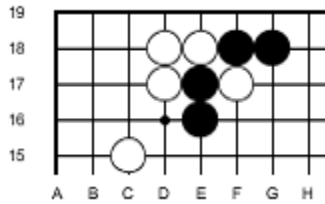
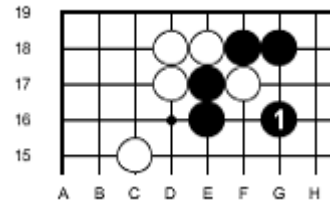


Figure A. How should black capture the single white stone.



The key point is the geta (surrounding move) at 1. Please do not play adjacent to the white stone and allow a ladder situation. 1 makes a perfect eye also.

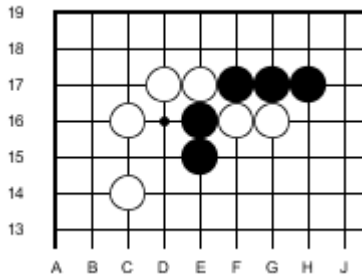
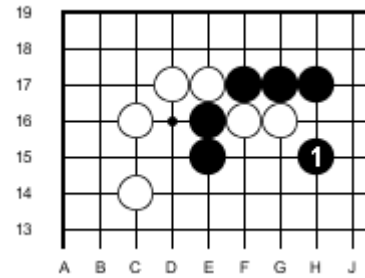


Figure B. How should black capture the two white stones.



After black 1 there is no escape for white.

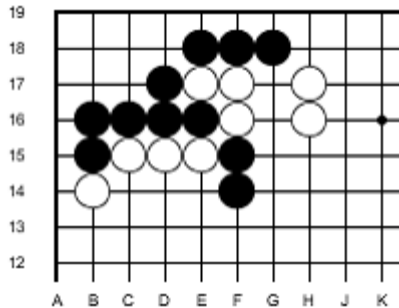
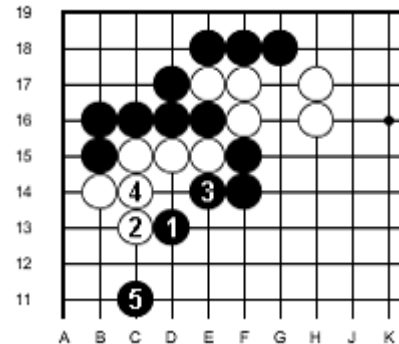


Figure C. How should black attack the 4 white stones.



The attack with black 1 is superb. The moves to 4 are forced. Black 5 puts enormous pressure on white. Black is gaining strength and influence.

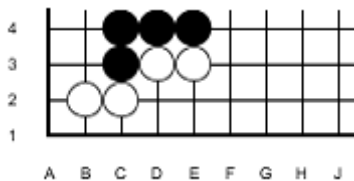
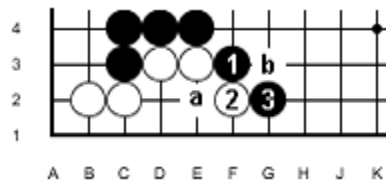


Figure D. How should black attack the white stones.



Black 1 and 3 are powerful. 3 is possible because of the double atari at a. White is surrounded.