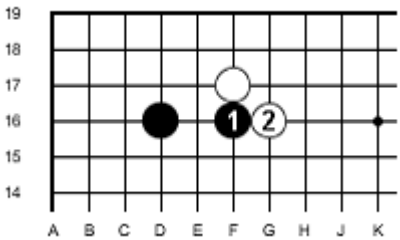
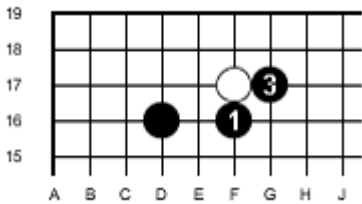


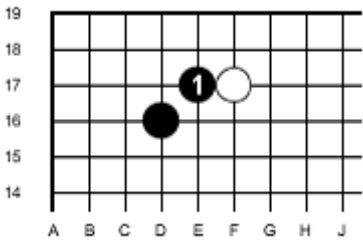
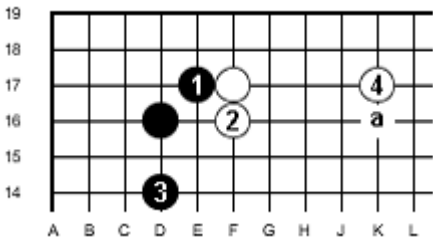
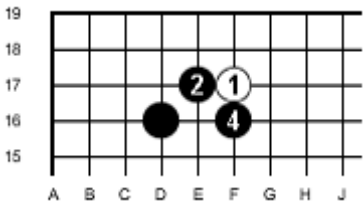
## Basic Concepts - Level 1 - 3

### Strengthen Your Important Weak Stones (1)

**Example 1:** Stones come into contact often in the course of a game. Learning how best to respond is necessary to maintain a balance of strength and territory.

|  |   |
|--|---|
|   |   |
| <p><b>Figure A.</b> If black attaches with 1 the white stone is weak and white should strengthen it. The most common reply is bending around with 2. Black may now want to strengthen his stones with a play at either E-17 or F-15.</p> | <p><b>Figure B.</b> If white plays elsewhere with 2 then black can get a strong grip on the white stone with 3 and white will be at a disadvantage locally in this case</p> |

#### Example 2:

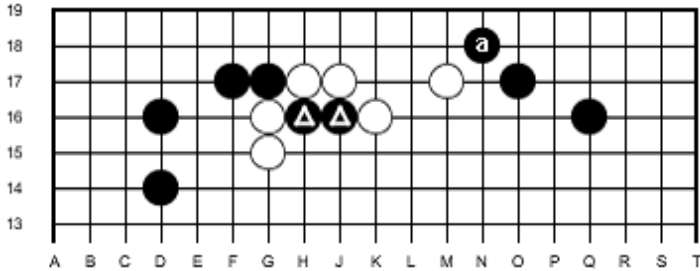
|   |  |
|---|--|
|    |    |
| <p><b>Figure A.</b> This time black attaches with 1 to keep white from expanding into the corner. How should white respond?</p> | <p><b>Figure B.</b> White's best reply is to extend up with 2 to keep white out of the corner. Black then expands his territory on the left with 3. White's 2 stones are now lacking a base for eyes so he extends to 4 or "a". This result is even. There are many other variations but the reader should be aware of the defensive importance of the moves 2, 3 and 4.</p> |
|    | <p><b>Figure C (left).</b> If white should play elsewhere with 3 then black can take a strangle hold on the white stone and make a powerful influence on that part of the board.</p> <p>The lone white stone is very weak and may come under further attack from the right side later.</p>   |

Note: The above examples of sequences begin with an attachment by black. Please do not infer that attaching is always the best way of playing. In fact strong players avoid attaching if it makes the opponent stronger unnecessarily. Each situation must be examined to determine the best way. Do not memorize patterns but try to understand the advantages and disadvantages of each way of playing.

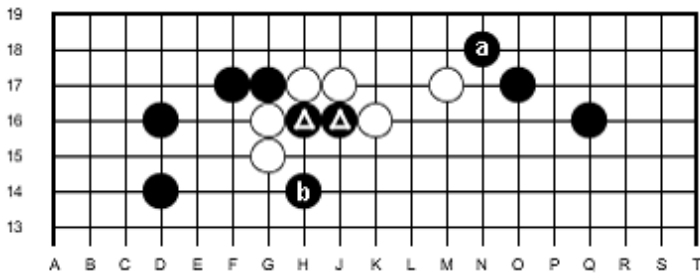
## Basic Concepts - Level 1 - 3

### Strengthen Your Important Weak Stones (2)

**Example 3:** Weak stones in the centre of the board.

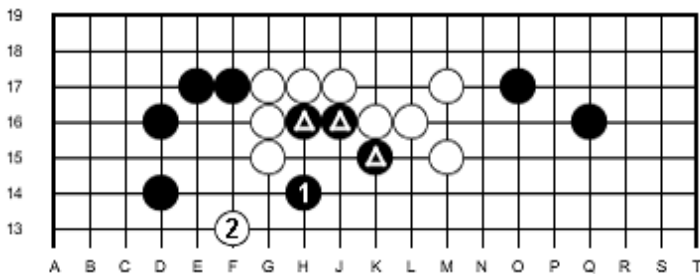


**Figure A.** Black's 2 triangled stones seem to be caught in a grip. They are important stones because they are separating 2 white groups. The black stone at a threatens the eyes of the white stones. Should black try and save them and if so how?



**Figure B** Black b is the proper move here. It looks risky to a beginner because the white stones can push through the gap. The triangled black stones however cannot be captured. It would be bad for white to try and escape with the 2 white stones. Why?

### Abandon Junk Stones



**Figure C.** In this case it is very bad for black to try and save the 3 triangled stones with 1. White is connected at G-17 so white pursues with 2 and black's stones are simply running away, not attacking or making territory. A better way is for black to play 1 at 2 and build up the left side perhaps or elsewhere. Black's prospects of building territory on the left side are reduced by white 2.