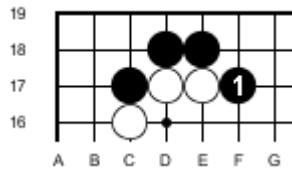


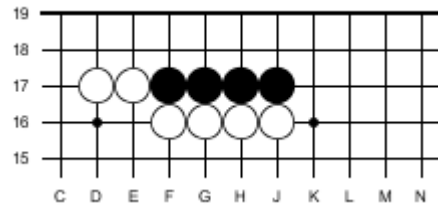
## Basic Concepts - Level 1 - 16

### There is Death in the Hane

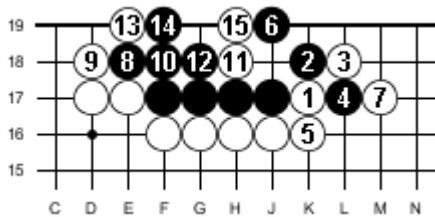
The hane (pronounced haw-nay) refers to a move that bends around a stone or group of stones.



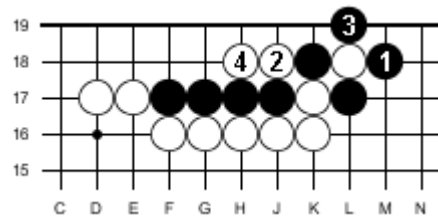
**Figure A.** Black 1 is called a hane as it bends around the two white stones. The proverb “There is Death in the Hane” refers to the fact that the hane can be a very severe move that weakens the stones being attacked while strengthening the attacker.



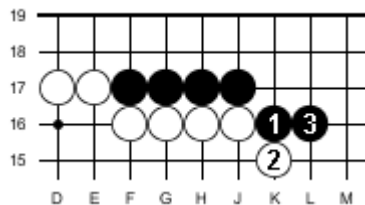
**Figure B** If it is white’s turn he should not miss the opportunity to play hane against the black group.



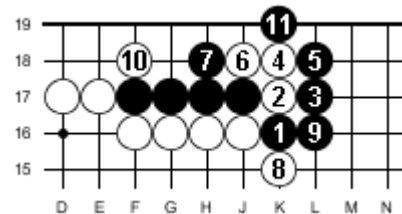
**Figure C.** White plays hane with 1 and a second hane with 3. Black struggles in vain to make two eyes but it is futile. What if black captures white 3 with 4?



**Figure D.** If Black ataris the white stone white counter ataris and captures 4 black stones. This is better for black than Figure C.



**Figure E.** If black hanes first he expands to the 4’th line and the crushing hane by white in Figure C is not allowed. What if white cuts with 2. See Fig. F



**Figure F.** If white cuts with 2 black captures with the moves to 7. White gets compensation with the atari at 8 and the forcing move at 10. Considering this and comparing the black territories in E and F we see that black’s territory is smaller in F but his influence to the right is much greater. Note also that white has another atari to the left of black 7 for a further gain. But this may be held in reserve for a later ko threat.