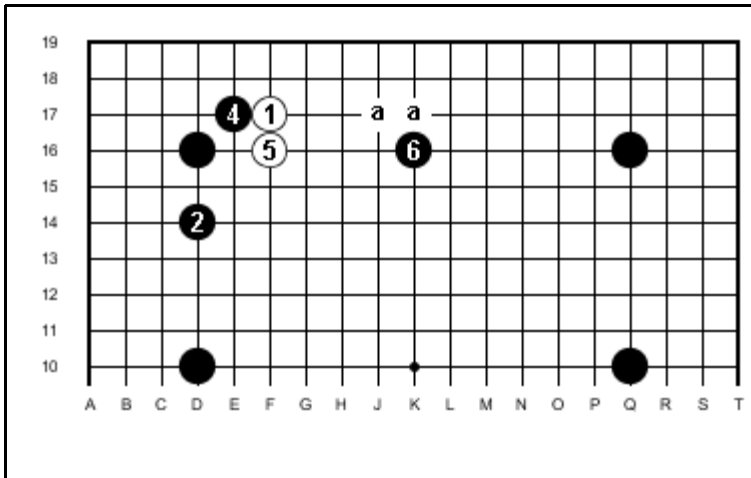


## Basic Concepts - Level 1 - 14

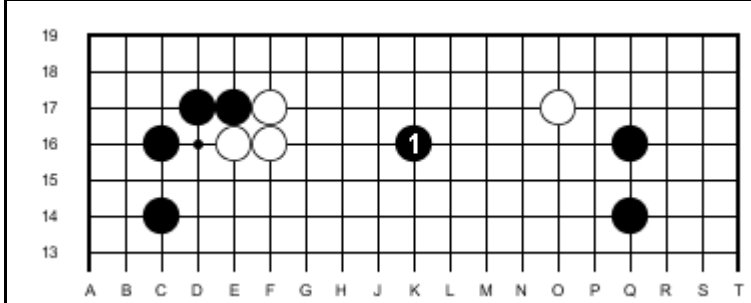
### Attacking Heavy Stones



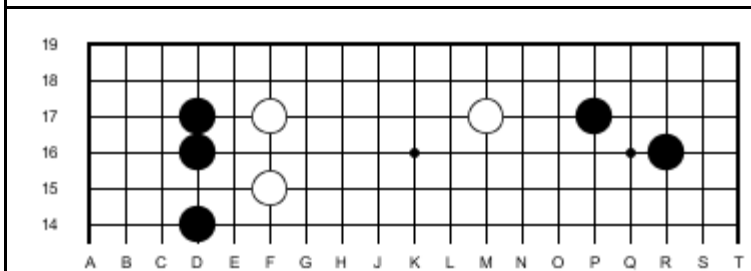
After black 2 white 3 is played elsewhere and black has a chance to attack the lone white stone.

He starts with an attachment at black-4 and white needs to answer at 5 to prevent a black move there. Since white has no base black attacks at 6 or on the "a" points to deprive white of a base.

Black will continue to make life difficult for white and at the same time make territory on the right side. Note also that because white is weak on the side it is difficult for him to invade at the 3-3 point.

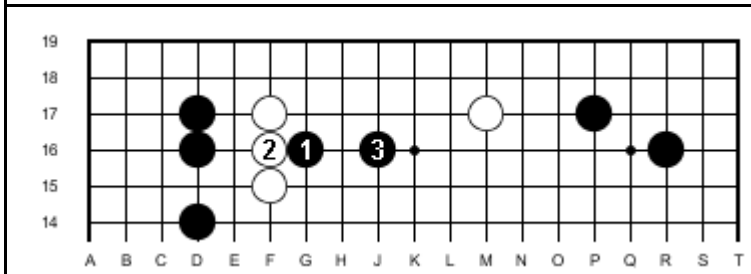


In this game white has failed to extend from his stones so black seizes the opportunity to attack both white groups with a move around 1. Attacking on the 4'th line here is better than the 3'rd line. The fighting is going to progress to the centre and Black-1 is better placed in that regard. Note that black is strong on both sides. That is another reason that supports the decision to attack.



In this diagram white seems to be a bit thin.

How can black attack? Can he first make white heavy?



Black peeps at 1 and plays at 3 isolating the 3 white stones on the left from the one on the right.

White is in trouble. Black is strong on both sides. Do you understand heavy stones. Could white avoid making his stones heavy with a different answer to black-1?