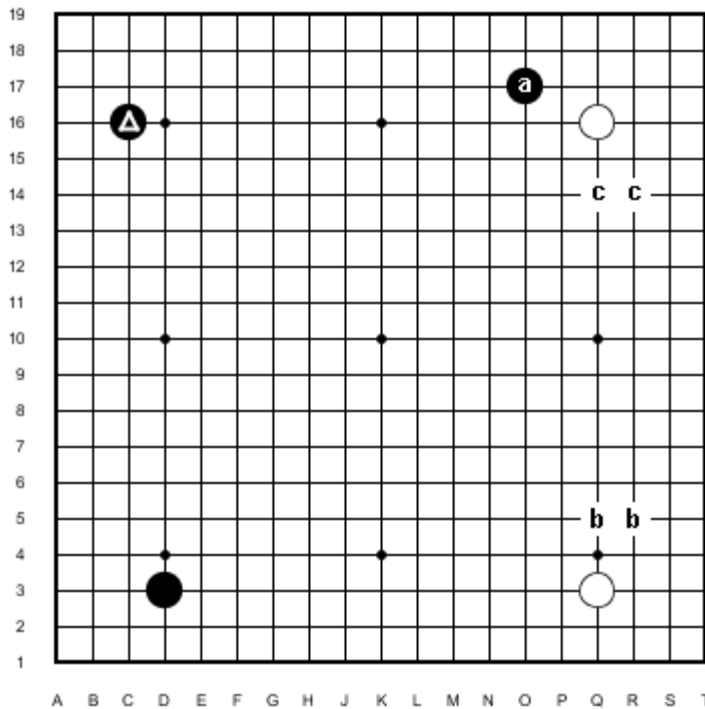


Basic Concepts - Level 1 - 12

A 2 stone corner enclosure is a big move

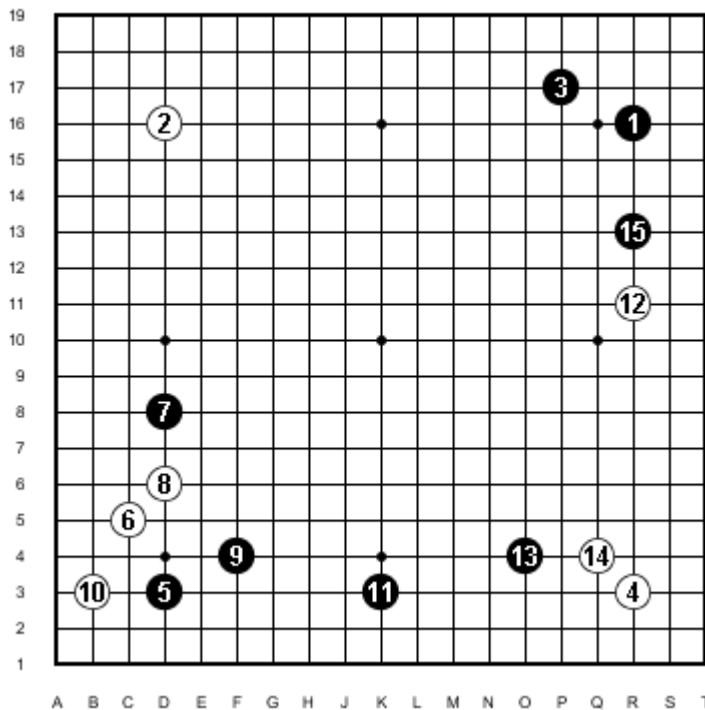
Opening Moves: Corner enclosures and approach moves



Against the white stone in the upper right it is common for black to approach with a knight's move. This move is made in relation to the triangled stone in the upper left. Think of it as an extension - the beginning of a large territory or area of influence. White may answer at either of the points "c" or elsewhere.

The idea of approaching on the 3'rd line against the 4-4 stone is that there is good follow-up in sliding under the corner stone with a knight's move or invading at the 3-3 point.

Black could also approach the lower corner but the relation to the lower right corner is not as good. Approaching between the white stones is playable but there is a feeling that white has an advantage.



This sample game taken from "In the Beginning" by Ikuro Ishigure shows two players, each taking up strategic positions.

For each of the moves shown give reasons why they are good. Reasons should consider

- territory (expanding your own or limiting your opponent's)
- defense value
- attack value

Discuss possible choices for white 16.

Black 3 enclosed a corner rather than occupy a vacant corner. Is this a bad choice?

If it were black's move instead of white's what are good choices do you think?