

Alberta Open Go Championship – 2009 Hosted by Sabaki Go Club

Edmonton, May 9th~10th



Where: Korean Community Association, 9636 105A Avenue NW
<http://maps.google.ca/maps/ms?msa=0&msid=107328937069522164639.000449c20530d1fd4cb0d&hl=en&ie=UTF8&ll=53.549959,-113.485594&spn=0.007381,0.016479&z=16>

Time: Doors open Sat. at 8:30 am. Games start at 9:00 am.

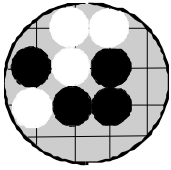
Divisions:

Divisions	Entry Fees	Youth Fee
A – 4 dan up	\$20.00	\$15
B – 1 dan – 3 dan	\$20.00	\$15
C – 5 kyu – 1 kyu	\$20.00	\$15
D – 9 kyu – 6 kyu	\$20.00	\$15
E – 16 kyu – 10 kyu	\$15.00	\$15
F – beginner	\$15.00	\$15
Team Match	\$15/team	na

**Divisions are subject to change depending on registrations.*

Format: Swiss 5 Rounds (Number of Round depends on number of entries)

Alberta Open Go Championship – 2009



Edmonton, May 9 - 10

Main Event - Time - 45 min each, Byo Yomi – 25 stones in 10 min.. Komi 6 ½

Handicaps set to 1 less than rating difference. 2 divisions. Max handicap – 9 stones.

- Prizes:** Great prizes!!! Any event with 6 or more entries will have a runner-up prize.
- Food:** Entry fee includes Sat., Sun. lunches, beverages.
- Billets:** Limited billets available for Friday and Sat. nights on a first come, first serve basis. Players needing billet must confirm registration early.
- Banquet:** A Chinese style 8-10 course banquet is held on Saturday night at 7:00 p.m. for \$20.00 per person (youth \$15.00 12 and under, includes tax/tip). Location to be announced.

The Alberta Go Association is pleased to announce the 2009 Alberta Open Go Championship hosted by the Sabaki Go Club!

Players from across the province are invited to Edmonton. The tournament will feature a Swiss format in six divisions, including a handicap division for beginner players. Fantastic prizes are planned for all divisions!

Team Match

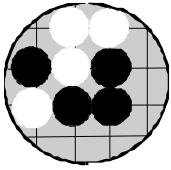
This is new. Cities such as Calgary, Edmonton, Lethbridge are encouraged to enter a team of 5. There will be 1 game only per player from the highest rank down. The team with the most wins will win the Alberta Team Challenge trophy awarded annually. Players may enter the team challenge as well as the main draw. Calgary Go Club has won the trophy the past 2 years. Can Edmonton reverse this in 2009?

In addition to the opportunity to play, learn, and compete, go players around the province will share experiences, meet old friends, and make new ones.

All the details are available on the attached information sheet and registration form.

>From 20 kyu to 6 dan, there will be something for everyone. Don't miss it!

Alberta Open Go Championship – 2009



Edmonton, May 9 - 10 Player Registration Form

Name: _____

Address: _____

Phone: _____ Rank: _____

Email: _____

I request a billet: (lodging with a local player) Yes _____ No _____

Describe how and when you will be traveling:

I/We will be attending the banquet: How many? _____ Will decide later _____

Payment Enclosed: Tournament: \$ _____ Banquet: \$ _____ Total: \$ _____

(Make cheque payable to – **SABAKI GO CLUB**)

Entry deadline: Tuesday May 5th, 2009 at 7:00 pm

Entries received after this date will be accepted at the discretion of the tournament committee.

Return Form to: **Luke Chung**

Phone: 780-489-5736

Fax: 780-489-5736

Mail: 18928 99 Avenue, Edmonton, AB T5T 3N1

Email: 2009albertaopen@gmail.com